

623-625 Queensberry Street North Melbourne VIC

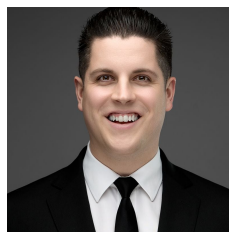
TM Commercial is pleased to present the opportunity to secure a Premium Office in Melbourne's northern City Fringe

Future-proof location set to significantly benefit from the Arden and Parkville Metro Tunnel Stations (due 2025), surrounded by the University of Melbourne & Bio-Medical Precinct as well as the Queen Victoria Market, Mixed-Use Zoning (MUZ) within the City of Melbourne and well serviced by Public Transport networks

Property Features:

- + 206m²* Land size
- + 300m²* Floor area (Approx. as floor plans not available yet)
- + Rear Warehouse Area
- + Rear lane access

Building Size : 300 sqm
Land Size : 206 sqm
View : <https://www.tmcommercial.com.au/sale/vic/inner-city/north-melbourne/commercial/offices/1P0036>



Martin Henriksen
0433 890 018