



**7/14 Tasman Court Keysborough VIC**

3 🚗

Located just off the Dandenong Bypass, Eastlink, Mornington Peninsula and Frankston Freeways - sitting in the bowl of the court.

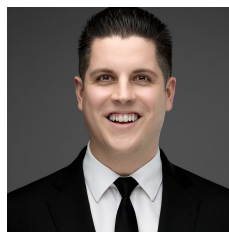
**Features Include:**

- \* 257sqm total building area
- \* Includes 40sqm total office area
- \* Seconds to Eastlink
- \* Fantastic onsite parking
- \* Container height roller door
- \* Great internal clearance
- \* Available August 2023

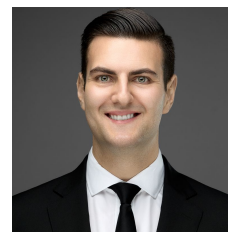
Please contact the exclusively listed agents for an inspection or further information.

Martin Henriksen - 0433 890 018

**Building Size** : 257 sqm  
**View** : <https://www.tmcommercial.com.au/lease/vic/south-east/keysborough/commercial/industrial/1P0066>



**Martin Henriksen**  
0433 890 018



**Tim Dark**  
0433 890 018