

2/61 Industrial Circuit Cranbourne West VIC

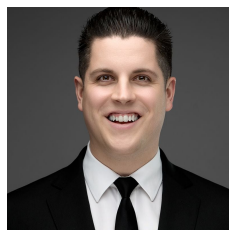
5 

located in Cranbourne Business Park within Thompson Base precinct's most coveted address and close to Thompson Rd, Dandenong-Hastings Rd and Merinda Park Rail.

Property Features:

- * Building area of 298sqm*
- * First floor air-conditioned offices space 41sqm*
- * Street frontage
- * Internal warehouse height 7m* +
- * Amenities
- * 3 Phase power
- * Motorised roller doors 5m* high
- * 5 carparks
- * Securely gated

Building Size : 298 sqm
View : <https://www.tmcommercial.com.au/lease/vic/south-east/cranbourne-west/commercial/industrial/1P0070>



Martin Henriksen
0433 890 018

Please call the exclusively listed agents for an inspection or