



1/27 Industrial Circuit Cranbourne West VIC

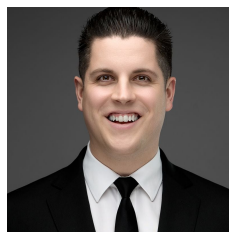
5 

located in Cranbourne Business Park within Thompson Base precinct's most coveted address and close to Thompson Rd, Dandenong-Hastings Rd and Merinda Park Rail.

- + Available Mid-March 2024
- + 277sqm total building area
- + 207sqm warehouse
- + 20sqm ground floor office/showroom
- + 50sqm 1st floor office
- + 5 x car parks
- + Container height RSD
- + Electric sliding gate

Please call the exclusively listed agents for an inspection or further information.

Building Size : 277 sqm
View : <https://www.tmcommercial.com.au/lease/vic/south-east/cranbourne-west/commercial/industrial/1P0083>



Martin Henriksen
0433 890 018