



**A4 Cnr Thompsons Rd & Berwick Cranbourne Rd Road
Clyde North VIC**

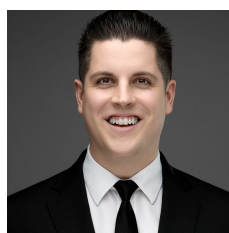
4 🚗

This is your opportunity to be part of an iconic retail precinct in the booming Clyde North area. With convenient proximity to transport infrastructure and a high exposure location.

Property Features:

- Groundfloor office/showroom of 37m2
- First floor office of 107m2
- Secure storage of 66m2
- Smooth concrete floor to ground level and carpet tile to first floor office area
- Abundance of parking
- Corporate fit out
- Split System heating & cooling
- Available May 2024*
- External business signage opportunities (STCA)

Building Size : 144 sqm
View : <https://www.tmcommercial.com.au/sale/vic/south-east/clyde-north/commercial/retail/1P0088>



Martin Henriksen
0433 890 018



Rudi Mitt
0477 987 866